



# Climate CRISIS Review Part 2 - Jan 14 2025

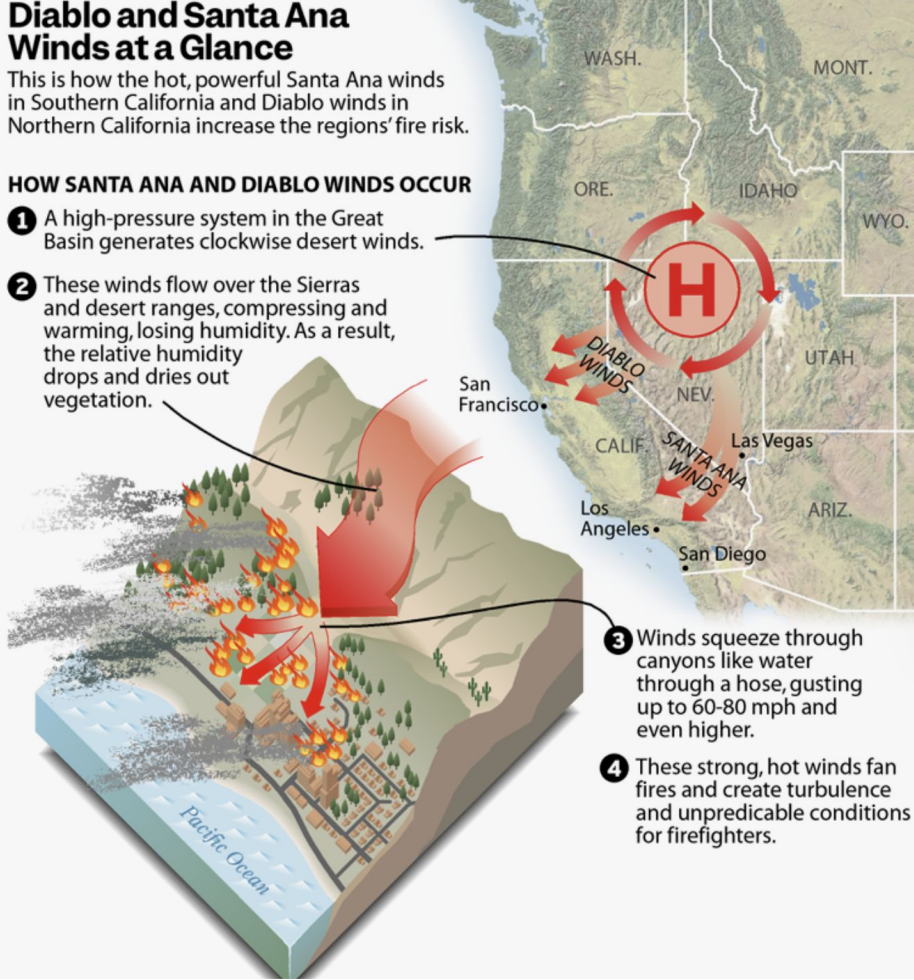
After the LA **inferno**  
CA is planning a  
“Make Polluters Pay”  
Climate SuperFund  
bill.

## Diablo and Santa Ana Winds at a Glance

This is how the hot, powerful Santa Ana winds in Southern California and Diablo winds in Northern California increase the regions' fire risk.

### HOW SANTA ANA AND DIABLO WINDS OCCUR

- 1 A high-pressure system in the Great Basin generates clockwise desert winds.
- 2 These winds flow over the Sierras and desert ranges, compressing and warming, losing humidity. As a result, the relative humidity drops and dries out vegetation.
- 3 Winds squeeze through canyons like water through a hose, gusting up to 60-80 mph and even higher.
- 4 These strong, hot winds fan fires and create turbulence and unpredictable conditions for firefighters.



Santa Ana winds are hot dry OFFshore winds - usually in fall. These were stronger because climate change puts more energy into the system

# **Make Polluters Pay**

A bill is being planned called

## **Ca Climate Superfund Bill**

It will charge the big oil companies and other polluters, to help cover the costs of climate disasters. (future info on my weekly newsletter)

# **Week 2 - Solutions En-Roads**

There are a great many Climate Change solutions and basically we need ALL of them.

Part 1 - intro and basic look at solutions

Part 2 - new features - impacts, maps etc.

Part 3 - discussion

# internet

Link	SeniorWaves 5GHz
Password	waveseniors

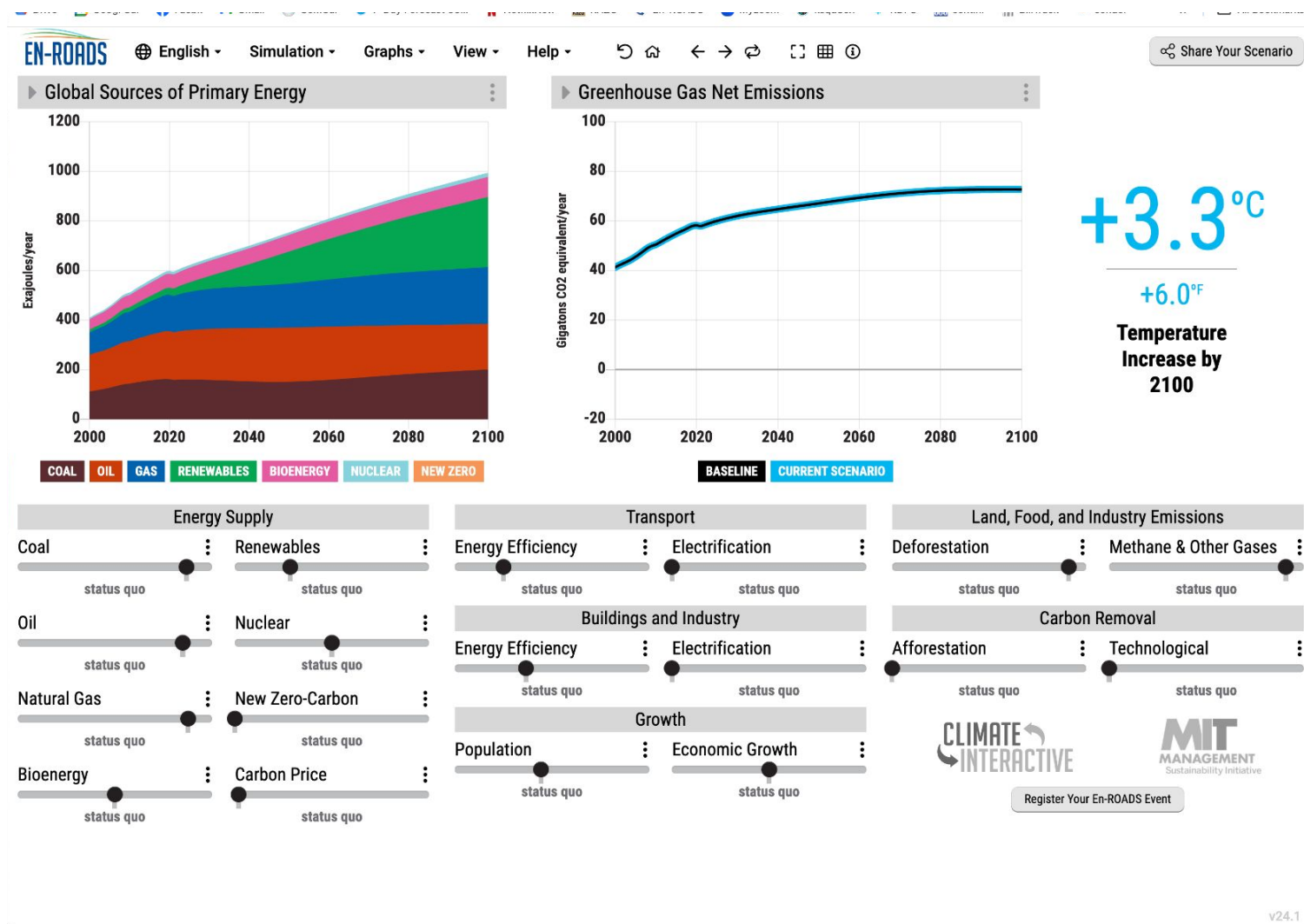
To quickly get to Enroads

[scruzclimate.org/](https://scruzclimate.org/OLLI-2025)OLLI-2025

# En Roads

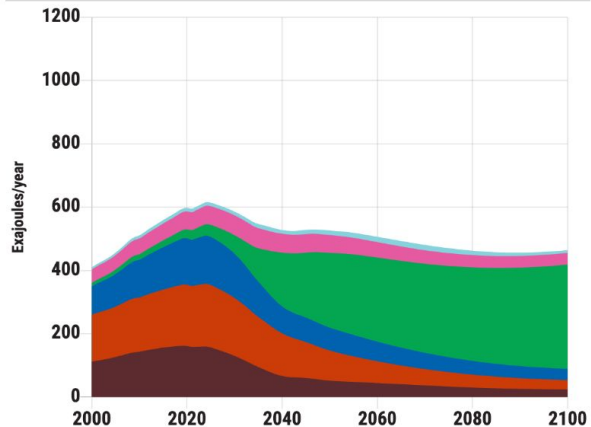
MIT  
simulation  
- allows  
you to  
compare  
solutions

[link](#)

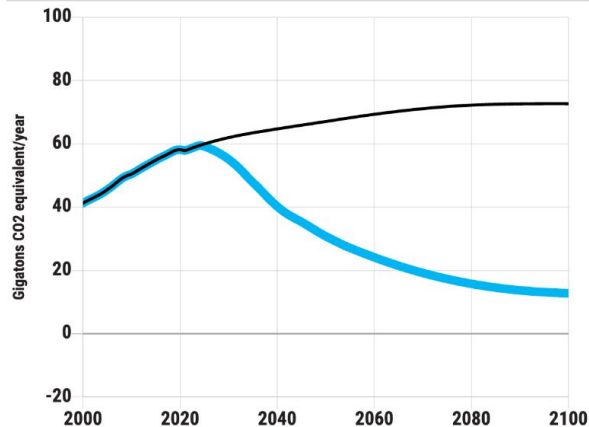




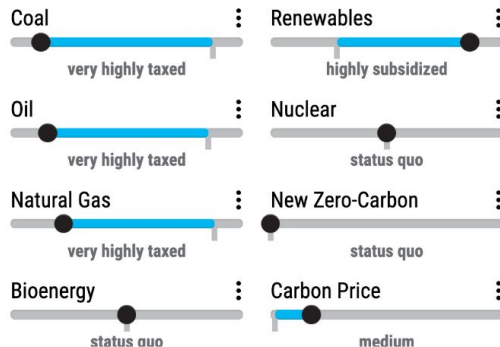
## Global Sources of Primary Energy



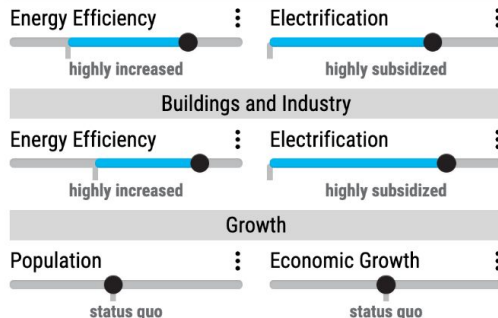
## Greenhouse Gas Net Emissions

**+2.0°C****+3.5°F****Temperature  
Increase by  
2100**

## Energy Supply



## Transport



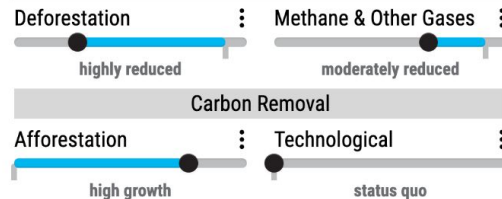
## Buildings and Industry



## Growth



## Land, Food, and Industry Emissions



# To access slides and links

<https://scruzclimate.org/olli-2025/>

See you next week!

Email me at paulineseales120@gmail.com